

## Capacitor Duty Contactors



**SHAMROCK  
CONTROLS**

**RoHS  
Compliant**

# Capacitor Duty Contactors

## Characteristics, Specifications & Dimensions

### Why special Capacitor Duty Contactor



TC1-D12K02XX



TC1-D20K11XX



TC1-D60K12XX

#### Product Range

415V AC rating 10kVAR thru 60 kVAR, available in eight ratings, conforming to IEC - 60947, IS 13947-4-1

#### Benefits

- Conforms to utilization category AC 6B as per IS 13947-4-1
- Saves cost of expensive replacements
- High electrical life
- Reduced watt loss during 'ON' condition, saves energy
- High Safety
- No risk of dangerous voltage
- Switching of Capacitor bank in parallel without de-rating
- Less maintenance & down - time

### Specifications

KVAR* rating at 50/60 Hz $\theta \leq 55^{\circ}\text{C}$ (3)		Instantaneous Auxiliary Contacts		Maximum Operating Rate	Electrical Life at rated load	Catalog Number
200V 240V	400V 440V	NO	NC	Operations hour	Operations	
5.5	10.0	1	1	240	200000	TC1-D10K11XX TC1-D10K02XX
6.7	12.5	1 0	1 2	240	200000	TC1-D12K11XX TC1-D12K02XX
8.5	16.7	1 0	1 2	240	200000	TC1-D16K11XX TC1-D16K02XX
10.0	20.0	1 0	1 2	240	100000	TC1-D20K11XX TC1-D20K02XX
15.0	25.0	1 0	1 2	240	100000	TC1-D25K11XX TC1-D25K02XX
20.0	33.3	1	2	240	100000	TC1-D33K12XX
25.0	40.0	1	2	100	100000	TC1-D40K12XX
40.0	60.0	1	2	100	100000	TC1-D60K12XX

#### Notes

- (1) Additional Aux. Contact block (Side mounted) type TABDN11 or TABDN20 can be mounted, if required
- (2) Contactor Type TC1D12K - TC1D25K : Suitable type clip-on mountin into 35mm DIN rail  
Contactor Type TC1D33K-TC1D60K : Suitable type clip-on mounting into 35mm & 75mm DIN rail
- (3) Average temperature over a 24-hour period, in accordance with IEC 70 and 831

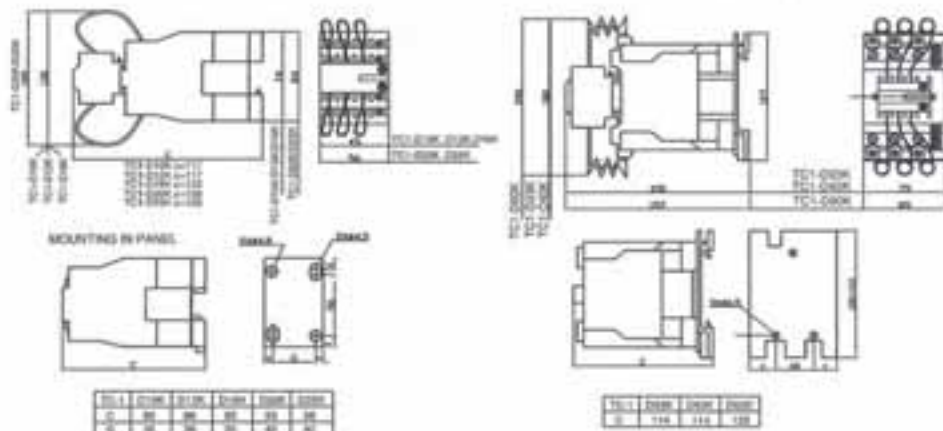
### Replace XX with voltage code from table - 1

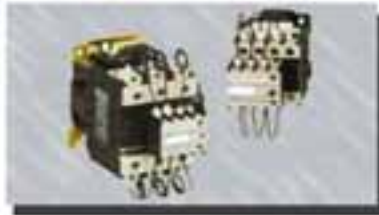
Table-1 : XX-AC Coil Voltages

Volts AC	24	48	110	120	208	220	230	240	277	380	400	415	440	480	575	600
50 Hz	B5	E5	F5			M5	P5	U5		Q5	V5	N5	R5			
60 Hz	B6	E6	F6	G6	L6	M6		U6	W6	O6			R6	T6	S6	X6
50/60 Hz	B7	E7	F7	G7		M7	P7	U7		Q7	V7	N7	R7			

TC1-D10K, D12K, D16K, D20K, D25K

TC1-D33K, D40K, D60K





Local Distributor



**SHAMROCK CONTROLS**

13735 Beta Road • Dallas, Texas • 75244  
Ph: (972) 233-6712 • Fax: (972) 233-8039  
[www.shamrockcontrols.com](http://www.shamrockcontrols.com)